



▶ LAX EXPANSION ...1

Issue 4

Volume 1

April 2012



▶ MARKET WATCH 2



▶ GLYNIS' HEALTH CORNER...2



DIRECT & BEYOND, INC
DIRECT SHIPPING BEYOND LIMITATION

888.876.1188 * www.shipdbi.com

DB Insider *focus*

LAX Renewal & Expansion Taking Shape

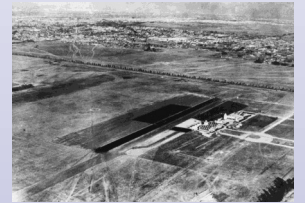
By DBI Staff Writer

The City of Los Angeles and Los Angeles World Airports has dubbed the expansion and renewal of LAX: "LAneXt". The city's publication on the project states, "LAneXt is literally the "next" chapter in the story of LAX. With over \$4.11 billion in completed or ongoing projects, and billions more planned in the future to complete the vision, LAneXt is easily the largest public works project in the history of the City of Los Angeles. And this massive investment is being made with **NO TAXPAYER DOLLARS** from the City's general fund." (Emphasis added).

At the heart of this renewal of LAX is the new Tom Bradley International Terminal which can easily be seen at virtually any location within or outside of the airport. Resembling the Sydney Opera House and meant to invoke the waves of the Pacific Ocean, this new terminal is scheduled to open in 2013 and is built to handle the next generation of larger aircraft and 150,000 square feet of premium retail, dining and luxury lounges for the travelling public. Ultimately, there will be an additional remote Mid-field Satellite Concourse that will also be able to handle the next generation of passenger aircraft like the Airbus A380 and Boeing 747-8.

Tying both new terminals together will be the split level air bridge (see photos below) that will contain a people mover on one level and

a train on the other level. At the center of the airport will be the new passenger processing center which will connect upstairs with the new Automated People Mover (APM) which is a fancy term for the train system that will move riders throughout the airport stopping at all terminals with 2 trains, each going in



Mines Field, now LAX, circa 1928



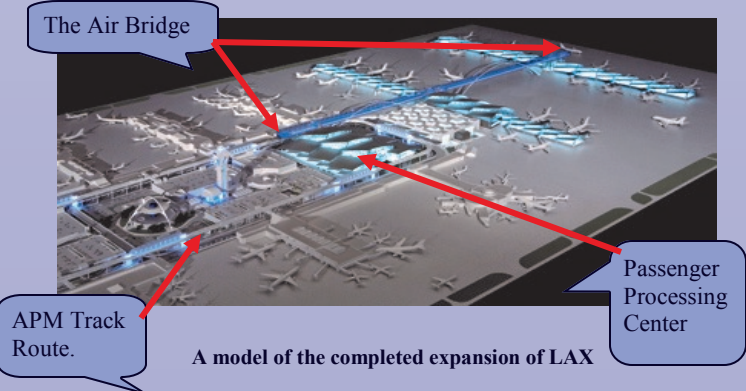
A Singapore A380 with the new International terminal under construction in the background.

the opposite direction. The APM will connect with Metro Rail Green line which will bring people in and out of LAX. The renewal and expansion of Los Angeles International Airport couldn't come at a better time. Passenger and cargo loads at LAX are back in the uptrend category having handled nearly 62 million passengers, 1.8 million tons of Air Cargo and over 80 tons in airmail in 2011 alone. Add that uptrend to the explosive growth of the Asia-Pacific region; which is projecting a 6.5% growth per year (compared to a 4% growth worldwide per year); and the Asia-Pacific region will be the

largest air travel market in the world by 2020. These combined factors will ensure that LAX will continue to play an increasingly key role in handling the passenger and cargo loads of the future in the global marketplace. For more on the LAneXt project visit www.la-next.com.



The new Air Bridge is seen above. Look closely and notice the left arch on the Air Bridge. That's an A380 under the air bridge. The A380 is the world's largest capacity passenger jet in use and its tail is nearly 79 feet high. That's the height of an 8 story tall building!



APM Track Route.

A model of the completed expansion of LAX

Passenger Processing Center



MARKET WATCH

Obama Administration trying to increase annual Transport Budget by \$30 Billion Dollars

President Obama's 2013 budget calls for nearly \$30 billion more on transportation infrastructure annually than the roughly \$50 billion sought through the House and Senate's competing surface transportation plans. Under a \$3.8 trillion budget re-

leased Monday, Obama directs Congress to spend \$476 billion over the next six years, or roughly \$80 billion annually. The budget calls for \$78 billion budget for the Department of Transportation in fiscal 2013. Obama is also restarting his push to spend \$50 billion immediately, a key element of the president's job's bill. "President Obama's budget for the Department of Transportation reflects our commitment to investing in an America that is built to last," said Transportation Secretary Ray LaHood. "A strong American economy depends on the roadways, runways, and railways that move people and goods from coast to coast and around the globe."

About \$305 billion would be spend on building roads and bridges over the next six years, a 34 percent increase over past authorizations, said the White House. Obama's budget proposal also would provide \$2.5 billion for the first year of a six-year, \$47 billion rail reinvestment plan, as the president continues to push the development of high-speed and inner city passenger rail expansion. The House's five-year transport plan would spend about \$52 billion annually, while the Senate's two-year transport bill calls for about \$54.5 billion annually in transportation infrastructure spending.

INTRODUCING: BUSTER & JET THE DBI MASCOTS



From Left to Right, Jet & Buster

By The DBI Staff Writer
Resting comfortably under the current of phone calls, quotes, shipment tracking, routings, dispatch and everything else operational at DBI's headquarters lies Jet the black cat and Buster the Boxer. Buster and Jet are the ultimate moral builders and the official mascots of Direct & Beyond. When not working on loving it up with the DBI team, Jet normally is playing with his fellow neighborhood cats at home. Buster employs his spare time being loved in a big way by his Mom and Dad, Glynis and Durk Jorritsma. Next time you call on DBI be sure to pass a greeting along to Jet and Buster.



US on Highway Diesel Fuel Prices for California:

3/19/12: \$4.481 per gallon
3/26/12: \$4.476 per gallon
4/02/12: \$4.456 per gallon

Change From:
1 Year ago: 0.133 ↑

Data as of 4/9/2012



Glynis' Health Corner

The Many Uses for Aloe Vera By Glynis Jorritsma

Aloe Vera is commonly used as a skin healer, moisturizer and softener. It is dramatically effective on burns of all types including sunburns. It is also good for cuts, insect stings, bruises, acne and blemishes, poison ivy, welts, skin ulcers, eczema and itchy skin. It is also very soothing for "hot spots" on pets. Taken internally 98% pure Aloe Vera is known to aid in the healing of stomach disorders, ulcers, constipation, hemorrhoids, rectal itching, colitis, and all colon problems. It can also be helpful against infections, varicose veins, skin cancer and arthritis.

Glynis Jorritsma
Glynis brings to DBI over 20 years of experience in the nutrition and healthcare industry. It is our pleasure to be able to offer these helpful health tips to you each month with the hope of improving the enjoyment of your life.



DIRECT & BEYOND, INC.
DIRECT SHIPPING BEYOND LIMITATION

Your Transportation Company for Life.

P.O. Box 90448
Los Angeles, CA. 90009

